

ONTARIO

TORONTO
156 Front Street
Suite 600
Toronto, ONT
M5J 2L6
Tel: (416) 598-2920
Fax: (416) 598-5394

OTTAWA
464 Somerset St. West
Ottawa, ONT
K1R 5J8
Tel: (613) 231-6755
Fax: (613) 231-2480

MANITOBA

WINNIPEG
1821 Wellington Ave.
Suite 210
Winnipeg, MB
R3H 0G4
Tel: (204) 779-7900
Fax: (204) 779-1119

BRITISH COLUMBIA

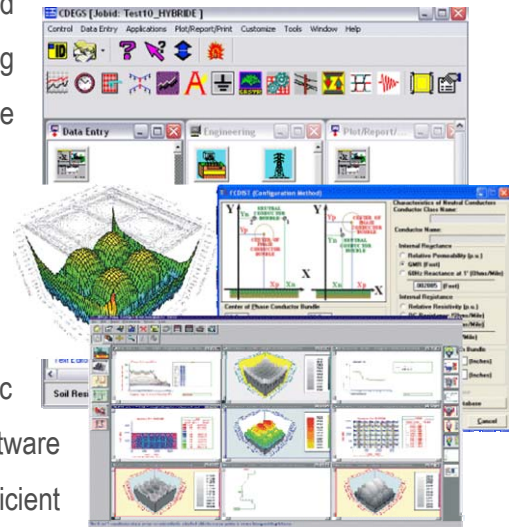
VANCOUVER
740 Nicola Street
Suite 200
Vancouver, BC
V6G 2C1
Tel: (604) 687-1821
Fax: (604) 683-5681

TRAIL
1050 Eldorado Street
Suite 202
Trail, BC
V1R 3V7
Tel: (250) 364-3188
Fax: (250) 364-3289

KELOWNA
2323 Hunter Road
Suite 210
Kelowna, BC
V1X 7C5
Tel: (250) 860-6421
Fax: (250) 860-6431

GROUND TESTING AND DESIGN

MCW/AGE Power Consultants is an experienced provider of complete grounding design and testing services. Our grounding design experts are continually upgrading their training to stay abreast of ever-evolving industry trends. Using tools such as LEM Unilap GEO X ground testing equipment and Safe Engineering Software's CDEGS (Current Distribution, Electromagnetic Fields, Grounding and Soil Structure Analysis) software package, we can provide our clients with highly efficient and cost effective grounding designs as well as a wide variety of specialty surveys and studies.



Some of our previous projects include:

- Grounding grid design for a 230kV, 80MVA utility owned Greenfield Substation applying ground wells under rocky conditions;
- Ground grid design and Verification Testing for a 4.16kV Outdoor Metal Enclosed Switchgear Upgrade;
- Glide path and Localizer Antenna Ground Testing at a major airport;
- Zone of Influence Studies at Transmission Tower/Cell Antenna Co-locations for a major telephone company;
- Ground Grid Design and Verification Testing of a 66kV, 30MVA Industrial Substation; and,
- Ground Grid Design and Verification Testing of multiple 12.47kV switchgears and unit substations in an arena complex.